

**C R U I S E R
R A C E R**
www.cruiser-racer.com

Buscarons, 6. 08022 Barcelona (Spain)
Tel.: (+34) 934 186 632
Mobile: (+34) 616 420 634
E-Mail: info@cruiser-racer.com

BENETEAU FIRST 40 YAMAMAY



Yacht Name	BENETEAU FIRST 40 YAMAMAY	LOA	12.20 m
Model	BENETEAU FIRST 40 YAMAMAY	Beam	3.77 m
Designer	BRUCE FARR DESIGN	Draft	2.40 m
Year	2000	Displacement	6948 kg
Location	SANTANDER	Engine	VOLVO 2040 , 40 Hp
Price	92.900€	Accommodation	6 Berth, 3 Cabin

Broker's Comment: Unique opportunity for a winning cruise at the highest level

Description: Regatta Cruiser well known in competition environments for its quality-price-competitiveness ratio. Easily transformed into a cruiser and well recognized in all sailing forums. This unit is really well optimized and its state of preservation is excellent. List 7th Updated Navigability Certificate until 2028 NOTE: OPTIONAL SAILS (Asking for the price) NEW SAILS 2023: NOT USED SAILS set. Mayor North 3Di Raw 870 14.700 Dpi Genova Light/Medium 3Di Raw 870 12.600 Dpi Genova Medium/Heavy 3Di Raw 870 16.800 Dpi Spinnaker S2 Superlite/Kote SL 50 CTDR Spinnaker S2 Superlite/Kote SK 60 CTDR Trinqueta para Spi NLXI04CDAU

DESIGN

Builder:	BÉNÉTEAU
Designer:	BRUCE FARR DESIGN
Design Notes:	The First 40.7 combines a sleek and sophisticated racer with all the comforts of a luxurious cruiser. Her Bruce Farr-designed hull and powerful rig provide excellent performance on the racecourse or in the harbor

DIMENSIONS

LOA:	12.20 m
Beam:	3.77 m
Draft:	2.40 m
Displacement:	6948 kg

ENGINES

Engines:	VOLVO 2040 , 40 Hp
Engine Hours:	840
Propeller:	Folding 2 blades
Notes:	VOLVO 2040 , 40 Hp, Sail Drive 120 with 840 hours runing. 2018 Propeller. New dry seal joint in 2019

TANKS

Fuel:	110 l
Water:	240 l

GALLEY

Hot water:	Yes
Coolbox:	No
Refrigerator:	Yes
Water system:	Yes
Notes:	Fresh hot water (engine heater) sistem with thermo

NAVIGATION INSTRUMENTS

Electronics:	racing SALMON
GPS:	YES
VHF:	YES
Automatic pilot:	Yes
Plotter:	YES
Notes:	CPU Salmon E4 Black 2020 LT Thrane 500 compas 2020 B&G VMHU 1040 2018. Renewed in 2020: pcb,cups,vane,masta cable Sailmon Windbox 2020 Rate Gyro motion Sensor Sailmon 2021 GPS compass HS70 Simrad 2016 Speed & Depth Airmar 850 nmea 2000 2020 AP+Wifi+4G Router 2020 Diverse Forestay Loadpin sensor and Saimon amplifier 2019 SP2 rudder sensor 2017 Displays: 2 x Garmin GNX 120 2021; 2 x B&G HV20 2018 + 2 B&G GFD 2016; 2 B&G FFD 2013 Panasonic CF31 + external wifi Display + software 2019 Plotter B&G VHF Icom with exterior speaker Fusion Automatic Pilot Raymarine

DECK EQUIPMENT

Deck hardware:	LEWMAR
Winches:	LEWMAR
Notes:	2 x lewmar 44 ST 4speed. New bells in 2018 Harken main car and sheet sistem 2017 Genoa cars lewmar 2018 Halyards, sheets Dynemma gottifredi ; Harken Black Magic blocks; Tylaska shacles; Spinlock stoppers King Composites Carbon Deck mast joint 2014 XT with Ceramic Cam renewed in 2019 Main and Genoa Halyards new in 2021 Formula Spars Carbon steering Weel Cockpit Flexiteak cover 2017

SPARS & RIGGING

Sails:	North Sails Main 3Di 2018 Main 3D 860 2014 Main 3DI 680 2009 2 more mains for transport or cruising use Jib 145% l/m 3DL 860 2016 Jib 145% m/h 3Di 2019 Jib 130 % heavy 3DL taffeta 2016 Jib III 3DI tafeta 2016 Jib 145% m/h 3dl 860 2015 Jib 145% m/h 3dl 680 2010 Jib 145 % l/m 3dl 680 2012 Jib 145% médium panels Jib 120 % panels kevlar Jib 105% Kevlar tafeta panels Jib n4 Dacron Genoa Staysail panels kevlar with roller More genoas for transport and cruise Spi: S2 0.5 oz 2012 & 2016 S2 0,6 oz 2012, 2015 & 2017 S4 0,7 – 0,9 oz 2012 & 2015 S5 0,9 oz A3 0,7 – 0,9 oz A1 5.0 oz AO North cloth futurefiber antitortion cable 2021 ; karver top – down roller. Staysail downwind kevlar panels for light wind Staysail Downwind Mylar with roller More spinakers for cruising and transport
Rigging:	Rod
Mast:	Carbon
Boom:	Carbon
Vang:	Yes
Spinnaker pole:	Yes
Tuff luff:	Yes
Notes:	MAST King Composites High Modulation Carbon mast; Carbon spreaders, Rod Riging with BSI tensioners , 2014 PBO Backstay Future Fibers + Rod Stay with BSI tensioner 2018 Spreader supports Alu 5000, Spreader tips and pins renewed 2017 King composites Standard Modulation carbón Boom Hidraulic Mast Jack and gauges (mast elevator) Adjustable mast base bow stern 2014 Southern Spars Carbon Spinnaker pole with quicktrip+turboconnect+harken car 2021 Pole Harken lane in mast 2017 Backstay magic Wheel with carbón drum redirected to cockpit Integrated High modulation Carbon bowsprit with Bobstay 2015

ELECTRICAL

Batteries:	3
Battery Charger:	Yes
Notes:	2 litium service batterys Victron 2021 1 engine start battery Optima blue 2020 Battery Charger Victron bluesmart 12/30 2017 Victron galvanic isolator 2017 Victron 12 v Argofet Load splitter 2017 55ah alternator 2017 220v electrical panel Philippi 2016 Automatic Bilge pumps Aft and Forward Bilge 2017 Battery monitor Mastervolt Led Hella Nav lights 2016 Led interior lights

SAFETY

CE Registration:	yes
Fire-extinguishers:	YES
Epirb:	YES
Liferaft:	yes
Notes:	omplete security ítems (lifejackets, fireworks, fire extinguisers,medical suit, etc)

CONSTRUCTION

Notes:	Aristoblu AWLGRIP Blue color 2015; Stern in AWLGRIP snowwhite 2020 Nautix A4 Tspeed antifouling Shakerwell through valves 2,4 mt keel ; Bruce Farr keel preparation templates; + 38 kg added in bulb Bruce Farr Carbon Rudder self-aligning JEFA bearing system D:111mm Carbon Jefa tube bushings in stainless steel Harken bolcks and vectran transmisión sistem
--------	---

ACCOMMODATIONS

Berths number:	6
Cabins number:	3
Cabin height:	2 m
Air conditioning:	No
Heating:	No
Notes:	New cabin floor complete 2020 Electric 12v fridge

EXTRA NOTES

TV:	No
Radio CD:	No
Speakers Cockpit:	Yes
Cockpit Shower:	YES
Swimming ladder:	yes
Extra notes:	Music player with speakers Fusion

Image Gallery



Image Gallery



Image Gallery



Image Gallery

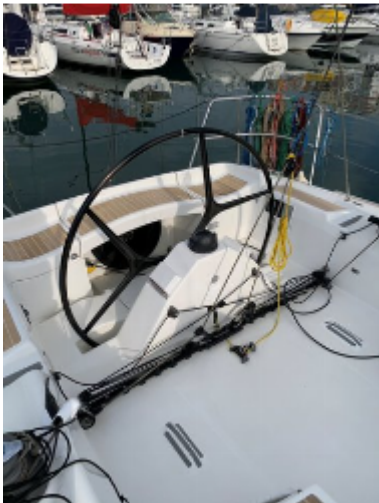


Image Gallery



Image Gallery



Image Gallery



Image Gallery

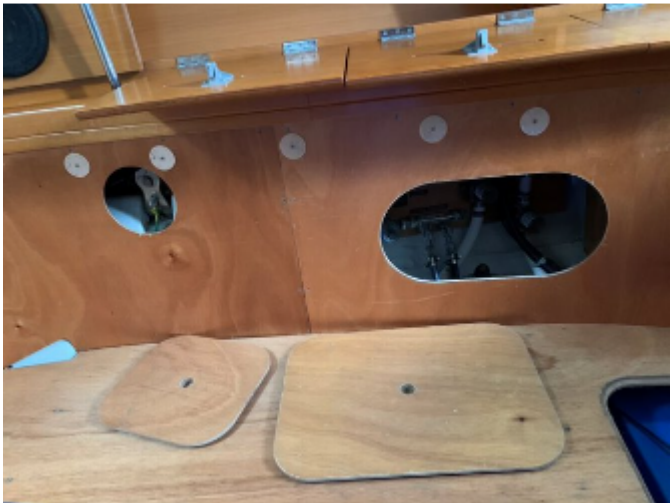


Image Gallery

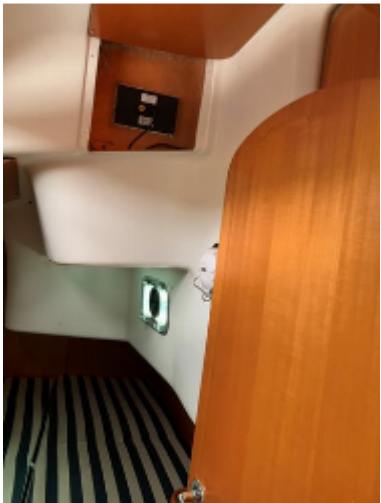
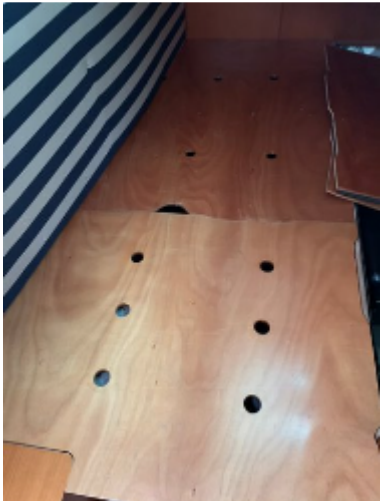
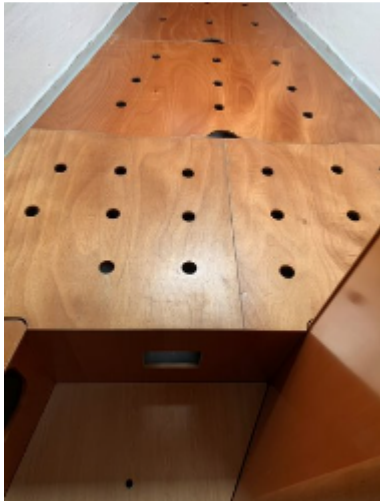


Image Gallery

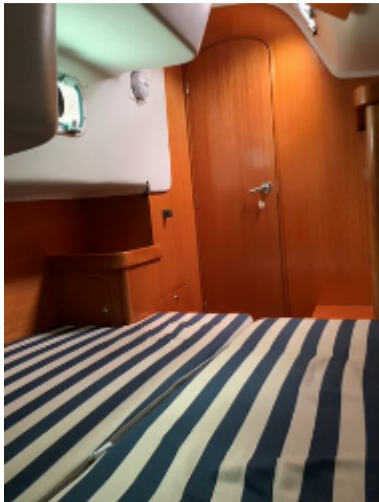
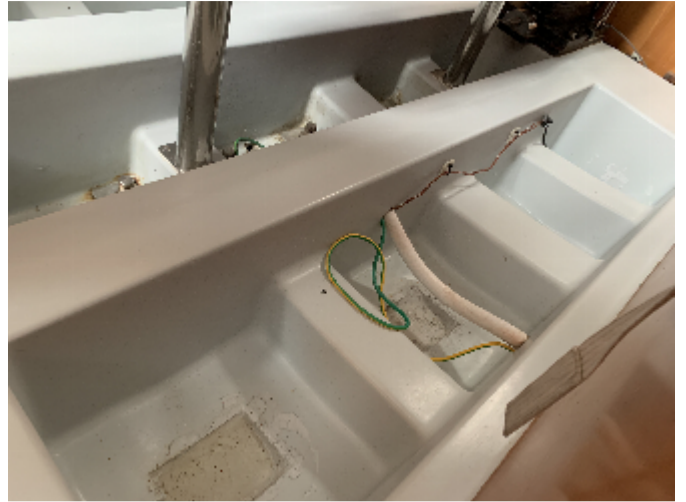


Image Gallery



Cruiser-Racer offers the details of all vessels in good faith but cannot guarantee or warrant the accuracy of this information or warranty the condition of any vessel and the details do not constitute a part of any contract. A buyer should instruct his agents, or his surveyors, to investigate such details as the buyer desires validated. All vessels are offered subject to prior sale, price change, or withdrawal without notice.

Cruiser-Racer provides professional yacht conveyancing and legal transfer of title for all yachts as per the ABYA Code of Practice with all deposit payments and final balance payments processed through secure dedicated client accounts solely for that purpose. Dedicated client accounts provided by Cruiser-Racer are written in trust at Natwest Bank and we are fully insured.