

**C R U I S E R
R A C E R**
www.cruiser-racer.com

Buscarons, 6. 08022 Barcelona (Spain)
Tel.: (+34) 934 186 632
Mobile: (+34) 616 420 634
E-Mail: info@cruiser-racer.com

CAMIRANGA SOTO 65



Yacht Name	Camiranga Soto 65	LOA	21.09 m
Model	Soto 65	Beam	5.678 m
Designer	Soto Acebal	Draft	4.17 m
Year	2014	Displacement	17051 kg
Location	Valencia	Engine	VOLVO PENTA D2 75HP
Price	990.000€	Accommodation	12 Berth

Broker's Comment: Excelent condition ready to go

Description: Soto 65 "Camiranga" is a wonderful racing machine that combines performance with comfort. She has a spacious cockpit with a very comfortable interior, a full galley and two bathrooms. She comes fully loaded with everything needed to race and be competitive from the first moment. She is very powerful and the Canting keel makes her fast and stable while the dagger boards keep her on track. Big square top main sail with powerful Jib and all the head sails need to make her as fast as possible complemented with ORC/IRC optimization. Her TCC is 1642 as of early 2018. Record-holder of the most important long and medium-length regattas in South America, SY Camiranga is a Hybrid boat, with excellent performance both racing and cruising, this is when she will really surprise you.

DESIGN

Builder: M Boats, Buenos Aires

Designer: Soto Acebal

Design Notes: Designed by Soto Acebal, built on carbon by ML Boat, this 65-foot canting keel, S65, features a modern and spacious design with a sail area compatible to a V70, providing comfort and speed. Her displacement allows the SY Camiranga to smoothly glide over the waves in light air. She has a Southern Spars Full Carbon rig, cutting edge Future Fibers stays, North Sails 3DI carbon sails, high performance lines and she weighs under 16 tons.

DIMENSIONS

LOA: 21.09 m

Beam: 5.678 m

Draft: 4.17 m

Displacement: 17051 kg

ENGINES

Engines: VOLVO PENTA D2 75HP

Propeller: 3 bladed folding

Cruising Speed: 9 kn

Notes: The propulsion system as well as the generator are Volvo Penta. The propulsion engine can be used as a generator in the event of a power engine malfunction. They can also work together in regattas by feeding the hydraulic pump for greater performance. For cruise mode, the boat has a sophisticated battery bank that allows you to sail quietly for many hours. ONE VOLVO PENTA D2 75HP DIESEL ENGINE ONE VOLVO PENTA D2 40HP DIESEL ENGINE

TANKS

Fuel: 550 l

Water: 386 l

Notes: Two 193 litres water tanks Water heater 40 litres One hydraulic oil tank 37 litres Two 262 litres fuel tanks

GALLEY

Hot water: Yes

Coolbox: Yes

Refrigerator: Yes

Water system: Yes

Notes: DOMESTIC EQUIPMENT Frigonauta ice maker Frigonauta freezer Frigonauta fridge 3 burner stove + oven Nespresso Coffee Machine

NAVIGATION INSTRUMENTS

Electronics: B&G

GPS: Yes

VHF: Yes

Automatic pilot: Yes

Plotter: YES

Radar: YES

Notes: The entire navigation system consists of several redundancies. There are more than five GPS systems that can operate independently, three independent communication systems, radar and all the necessary items for ocean navigation. The Main Navigation System has a FARO Processor interconnected to a Boat Computer, where all information received by the boat (speed, wind, apparent wind, heading, course on the ground, etc.) is analysed comparing with the polar curves of the boat, determining the better VMG, and the information is shared on the navigation screens. 4 B&G Vulcan 7R 1 Airmar Depth/Temp Sensor 2 GoPro Hero3 with SP Pov Case 1 Ipad Waterproof case 2 Portable VHF – Icon IC-M35 1 B&G V90 VHF Radio 2 B&G H90 VHF Handset 1 B&G CPU H3000 Fastnet Interface 1 Garmin GPS Map 620 1 Simrad NSS12 evo2 Multifunction display, with GPS 1 C-Zone Touch 5 screen 1 AT Display 1 Fusion BT 100 – Marine Bluetooth Module 1Solar Charging Power Bank Model ES500 1 Rosh Power Bank Output: DC 5V / 1A 1 Sony Portable Charger Output: DC 5V / 1,5 A 1 Label Printer Brother PT1090 1 Mobile Phone Motorola 1 Mobile Phone Samsung 1 Mobile Phone LG Nav Desk 1 Blue Sea 8110 Multimeter 1 Faro Advanced System 1 IPC2 – Computer Intel Core i5 5200, 16 GB RAM HD 233 GB, Monitor LG Flatron E1942, DVD RW Samsung, Windows 7 Pro - 32 bit Deckman V 9.1 Evolution V 2.10.24 NT+MaxPC 1 Actisense NGT-1 NMEA 2000 to USB

DECK EQUIPMENT

Winches: Harken

Notes: SY Camiranga is equipped with Cariboni hydraulics adjustment systems that controls the sails, winches, keel, and daggerboards, making sailing her easy and reliable. WINCHES All by Harken 990 carbon hydraulic

SPARS & RIGGING

Sails:	Sails Main sail North Sails (carbon) 3Di 2018 (used in two regatas) Jibs North Sails (carbon) #1- MHO #2- FRO 2013 #3- J2 3Di 2018 (used in two regatas) #4- J4 3Di 2017 #5- G5 2013 Fractional 3Di Carbon 2017 Masthead 3Di Carbon 2018 (used in two regatas) Asymmetric North Sails A2.0 A3 2018 (used in two regatas)
Rigging:	ExC6 carbon rigging
Mast:	Carbon Southern Spars
Boom:	Carbon Southern Spars
Vang:	Yes
Notes:	Southern Spars Carbon Mast Southern Spars Carbon Boom Future Fibers FF ExC6 carbon rigging Cables anti torsión 2022 / Furlers Karver service 2022

ELECTRICAL

Batteries:	new baterries 2021
Battery Charger:	Yes
Generator:	VOLVO PENTA D2 40HP
Notes:	Victron Energy power converter Inverter/Battery charger Mastervolt Mass Combi 24V / 4000 w / 120 v

SAFETY

Fire-extinguishers: YES

Epirb: YES

Liferaft: YES

Notes: In addition to the high standards in the build and equipment of CAMIRANGA safety of the crew members is also a priority. There are lifelines installed throughout the boat and all stanchions are made of titanium. Each crew member has an automatic life jacket, a double-ended safety belt and a personal locating device (AIS Main Overboard). In addition to all lifesaving equipment, CAMIRANGA has two 8-person Ocean Safety life rafts with a carbon case. She features a watertight bow compartment and seven Rule 2000 automatic pumps strategically distributed throughout the boat. Brands like Henri Lloyd, Spinlock, and Ocean Safety are stamped on weather gear and personal safety equipment.

CONSTRUCTION

Notes: Carbon/ Aramid hull Carbon rudders x 2 made in NZ Canting keel Refrasquine ITA Dagger boards x 2, carbon made in NZ Water ballast tank 1200 litres

ACCOMMODATIONS

Berths number: 12

Cabin height: 2 m

Air conditioning: No

Heating: No

Notes: Internally she has comfort accessories such as water maker, water heater, freezer, refrigerator, ice machine, espresso machine, oven and stove, 8 carbon beds, and 2 bathrooms

EXTRA NOTES

TV: No

Radio CD: No

Speakers Cockpit: No

Image Gallery



Image Gallery

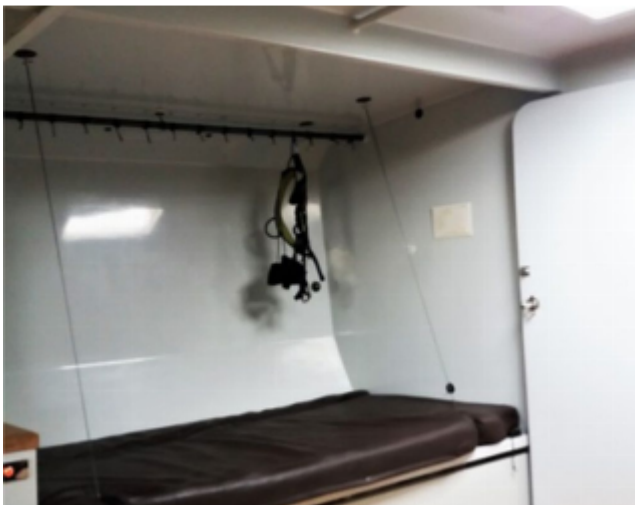


Image Gallery



Image Gallery



Image Gallery



Image Gallery

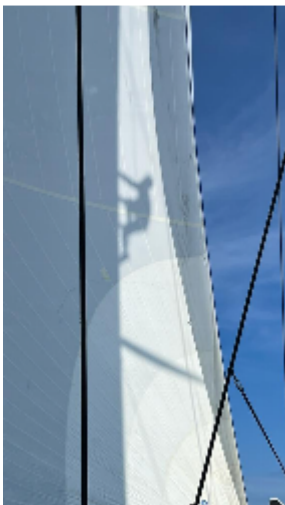
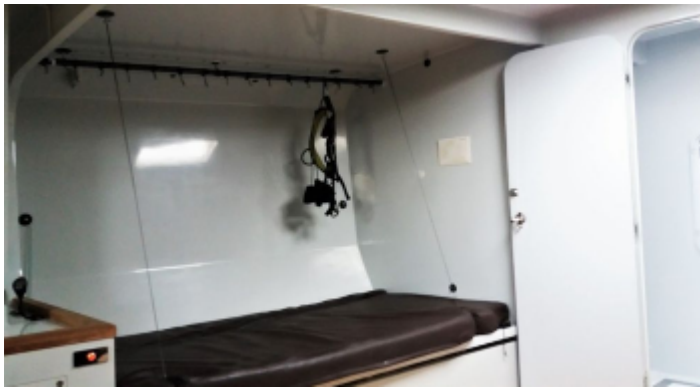


Image Gallery



Image Gallery

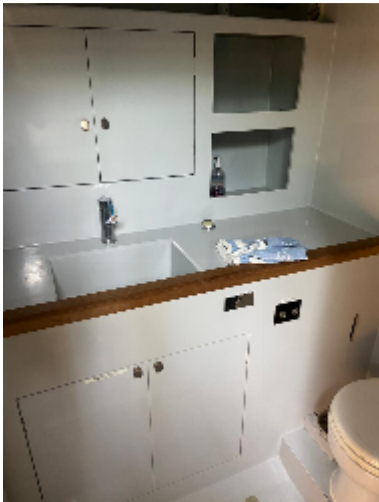


Image Gallery



Image Gallery

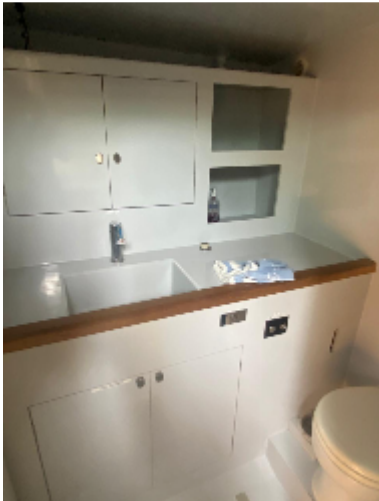


Image Gallery



Image Gallery



Image Gallery



Cruiser-Racer offers the details of all vessels in good faith but cannot guarantee or warrant the accuracy of this information or warranty the condition of any vessel and the details do not constitute a part of any contract. A buyer should instruct his agents, or his surveyors, to investigate such details as the buyer desires validated. All vessels are offered subject to prior sale, price change, or withdrawal without notice. Cruiser-Racer provides professional yacht conveyancing and legal transfer of title for all yachts as per the ABYA Code of Practice with all deposit payments and final balance payments processed through secure dedicated client accounts solely for that purpose. Dedicated client accounts provided by Cruiser-Racer are written in trust at Natwest Bank and we are fully insured.